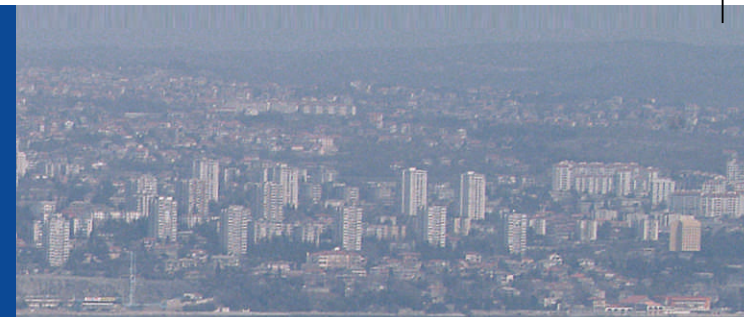




# VULKAN - NOVA d.o.o.

TVORNICA DIZALICA I BRODSKE OPREME

FACTORY OF CRANES & SHIP EQUIPMENT





## VULKAN-NOVA - UVOD

Poduzeće Vulkan osnovano je 1929. godine. Od samog početka formiran je osnovni pravac djelatnosti društva: proizvodnja brodske opreme, industrijskih dizalica i postrojenja za unutarnji transport.

Danas smo vodeći hrvatski proizvođač palubne opreme i jedan od proizvođača s najdužom tradicijom u ovom dijelu Europe.

Od prosinca 2007. godine imamo uveden sustav upravljanja kvalitetom EN-ISO 9001:2008. Certificirani smo od strane certifikacijskog društva Det Norske Veritas za područja razvoja i proizvodnju dizalica i brodske opreme.

Naša proizvodnja usmjerena je na proizvodnju proizvoda visoke kvalitete iz najkvalitetnijih sirovina i komponenti, a sve s ciljem zadovoljavanja KUPCA koji je uvijek u središtu pozornosti.

Poziciju vodećeg hrvatskog proizvođača palubne opreme i dizalica osigurali smo primjenom inovativnih proizvodnih tehnologija i inzistiranjem na strategiji stalnog i intenzivnog unapređenja kvalitete.

Vlastitim projektnim timom i razvojnim rješenjima spremni smo odgovoriti na sve projektne izazove i posebne zahtjeve.

Iskustvo od 80 godina, visoka kvaliteta naših proizvoda, usluga i konkurentne cijene rezultirali su velikim brojem kupaca koji su ukazali povjerenje našem poduzeću.

## VULKAN-NOVA - INTRODUCTION

The company Vulkan was established in 1929.

Since the very beginning the range of our major activities has included: manufacture of the ship equipment, industrial cranes and the machinery for internal transport.

Nowadays we are a leader in the manufacture of the ship equipment in Croatia and one of the manufacturers with the longest tradition in this part of Europe.

The management system of Vulkan-Nova conforms to EN-ISO 9001:2008 International Quality Standard. Our company was certified for the scope of design and manufacture of cranes and ship equipment by the certification body Det Norske Veritas in December 2007.

We are committed to providing our customers with superior products made of high-quality raw materials and components.

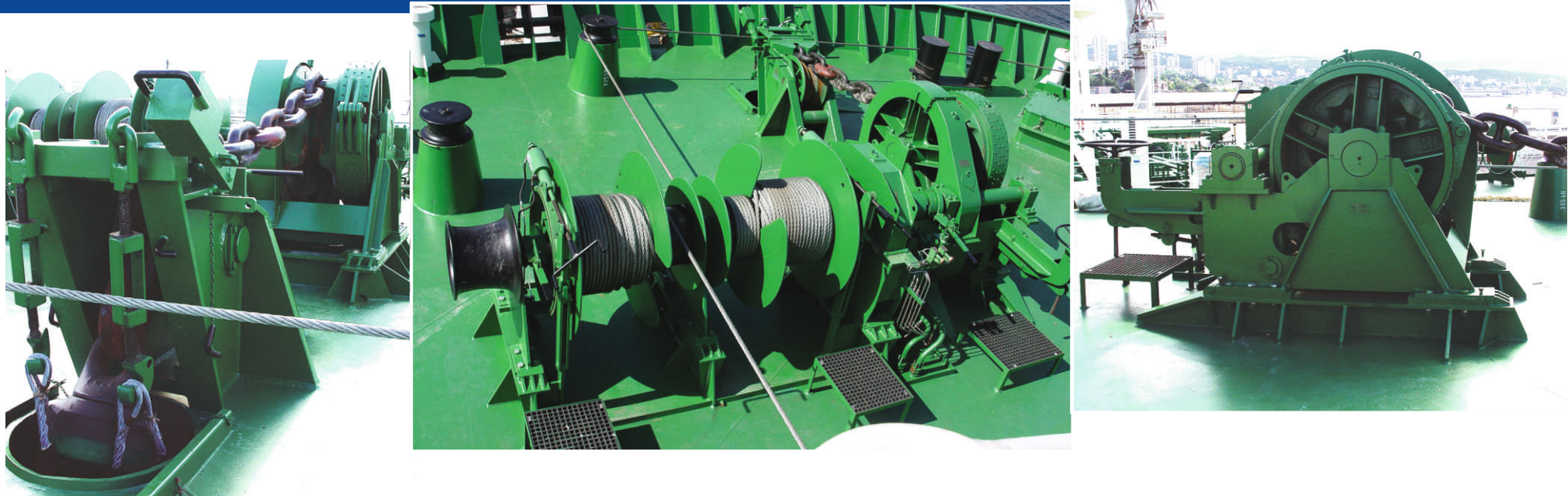
Our reputation of a leading Croatian manufacturer of the deck equipment and cranes has been built by employing the innovative manufacturing technology and insisting on the constant and intensive quality improvement strategies.

Owing to the extensive experience and elaboration of new projects our design office can offer solutions customized for each of our clients.

80 years of manufacturing experience, superior quality of our products and services and the competitive prices have resulted in a gratifying number of customers who have demonstrated their confidence in our company.

Sidreno pritezna vitla	Windlass mooring winches	2
Pritezna vitla	Mooring winches	3
Štoperi sidrenog lanca	Chain stoppers	4
Štoperi za tegalj	SPM stoppers	5
Vertikalna sidreno-pritezna vitla	Vertical windlass mooring winches	6
Ostala vitla	Other winches	7
Vertikalna pritezna vitla	Capstans	
Vitla za jakovljice	Winches for pilot ladders	
Oprema za privez	Lashing equipment	8
Bitve	Bollards	
Zjevače	Fairleads	
Dizalice strojarnice	Engine room cranes	9
Pomoćne dizalice strojarnice	Auxiliary engine room cranes	
Dizalice provijanta	Provision cranes	10
Usluge izrade brodske opreme	Ship equipment manufacturing services	11
Morski vez piona	Spud support for dredgers	
Naprava za izvlačenja osovine propelera	Propeller shaft puller	
Dizalični program	Crane program	12
Dvotračne električne mosne dizalice - DEMOD	Double girder electric bridge cranes - DEMOD	13-14
Jednotračne električne mosne dizalice - JEMOD	Single girder electric bridge cranes - JEMOD	15
Viseće električne mosne dizalice - VIMOD	Overhead electric bridge cranes - VIMOD	16
Stupne konzolne dizalice	Pillar-mounted jib cranes	17
Dizalice za marine	Cranes for marinas	18
Uređaji za dizanje i oprema za dizalice	Hoisting devices and crane equipment	19

# SIDRENO PRITEZNA VITLA WINDLASS MOORING WINCHES



## TEHNIČKE KARAKTERISTIKE

POGON: električni/visokotlačni ili niskotlačni hidraulički

KALIBAR LANCA: 40 - 111 mm

PRITEZNA SILA (U PRVOM SLOJU): 8 - 40 t

NOMINALNA BRZINA PRITEZANJA: do 20 m/min

BRZINA PRIKUPLJANJA NEOPTEREĆENOG UŽETA: do 45 m/min

KONFIGURACIJA: lančanik, jedan ili dva bubnja sa/bez priteznog zvona

KOČNICA: ručno ili hidraulički upravljana

SPOJKA: ručno upravljana

UPRAVLJANJE: lokalno i/ili daljinsko

## TECHNICAL CHARACTERISTICS

DRIVE: electrical/high-pressure or low-pressure hydraulic

CHAIN CALIBRE: 40 - 111 mm

MOORING FORCE (AT FIRST LAYER): 8 - 40 t

NOMINAL MOORING SPEED: up to 20 m/min

SLACK ROPE SPEED: up to 45 m/min

CONFIGURATION: cable lifter, one or two drums with/without warping end

BRAKE: manually or hydraulically operated

CLUTCH: manually operated

CONTROL: local and/or remote



# PRITEZNA VITLA MOORING WINCHES

## TEHNIČKE KARAKTERISTIKE

POGON: električni/visokotlačni ili niskotlačni hidraulički

PRITEZNA SILA (U PRVOM SLOJU): 8 - 40 t

KONFIGURACIJA: jedan ili više bubnjeva sa/bez priteznog zvona

KOČNICA: ručno ili hidraulički upravljana

SPOJKA: ručno upravljana

UPRAVLJANJE: lokalno i ili daljinsko

OPCIJA: automatski rad



## TECHNICAL CHARACTERISTICS

DRIVE: electrical/high-pressure- or low-pressure hydraulic

MOORING FORCE (AT FIRST LAYER): 8 - 40 t

CONFIGURATION: one or more drums with/without warping end

BRAKE: manually or hydraulically operated

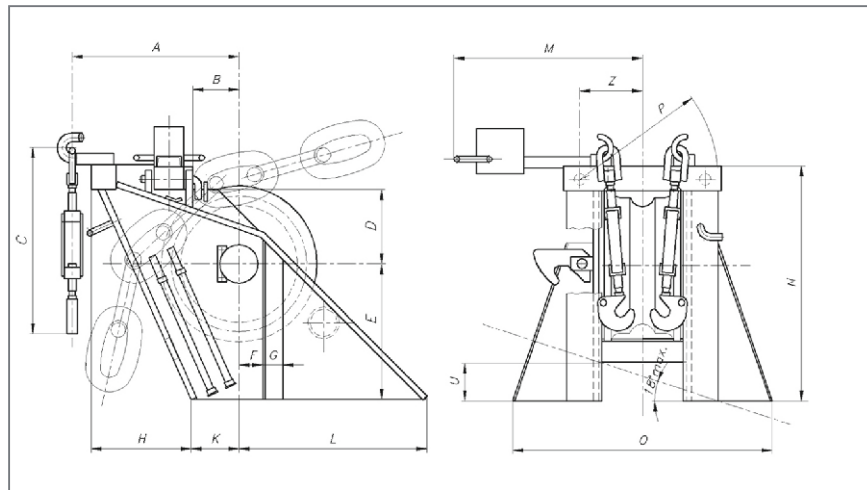
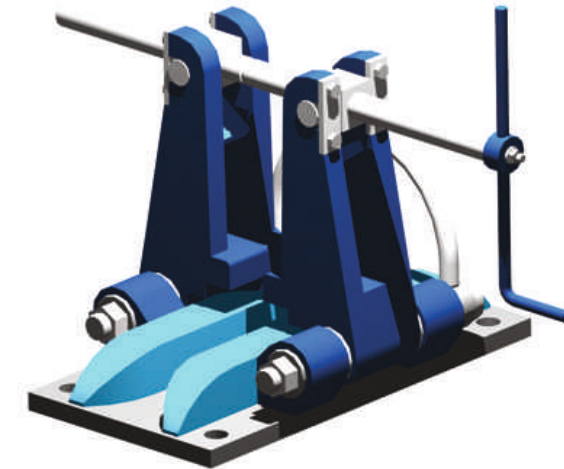
CLUTCH: manually operated

CONTROL: local and/or remote

OPTION: automatic operation



# ŠTOPERI SIDRENOG LANCA CHAIN STOPPERS



## TEHNIČKE KARAKTERISTIKE

NAZIV: ŠTOPER S KOLOM

KALIBAR LANCA: 40 - 111 mm

PROJEKTNJA SILA: 0.8 MBL

KONFIGURACIJA: kolo + poluga

UPRAVLJANJE: lokalno

## TECHNICAL CHARACTERISTICS

TITLE: ROLLER CHAIN STOPPER

CHAIN CALIBRE: 40 - 111 mm

DESIGN FORCE: 0.8 MBL

CONFIGURATION: chain wheel + dog

CONTROL: local

## TEHNIČKE KARAKTERISTIKE

NAZIV: KLIZNI ŠTOPER

KALIBAR LANCA: 17 - 73 mm

PROJEKTNJA SILA: 0.8 MBL

KONFIGURACIJA: vodilica + poluga

UPRAVLJANJE: lokalno

## TECHNICAL CHARACTERISTICS

TITLE: SLIDING CHAIN STOPPER

CHAIN CALIBRE: 17 - 73 mm

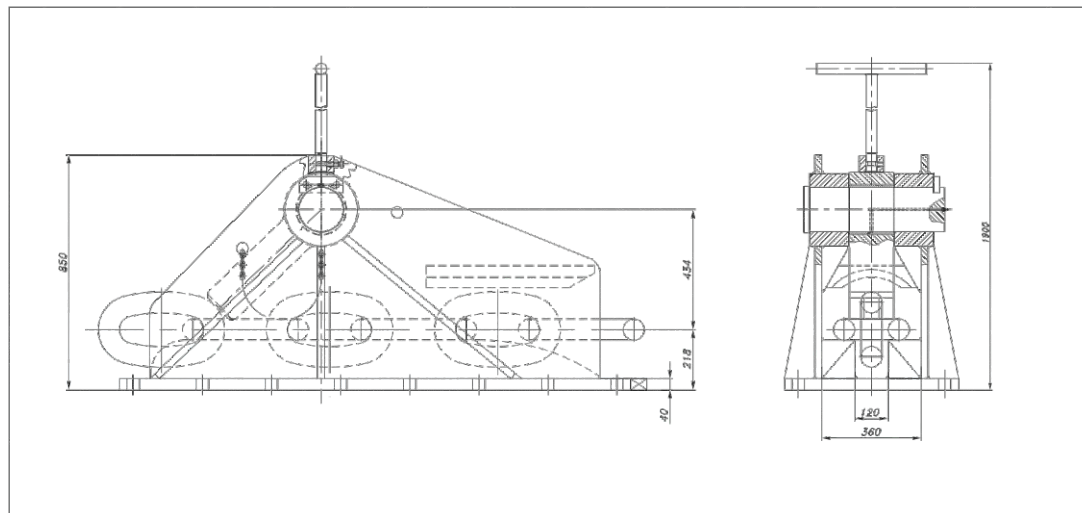
DESIGN FORCE: 0.8 MBL

CONFIGURATION: guide + dog

CONTROL: local



# ŠTOPERI ZA TEGALJ SPM STOPPERS



## TEHNIČKE KARAKTERISTIKE

NAZIV: ŠTOPER ZA TEGALJ

KALIBAR LANCA: 76 mm

NOMINALNA SILA: 200 t

UPRAVLJANJE: lokalno

## TECHNICAL CHARACTERISTICS

TITLE: SPM STOPPER

CHAIN CALIBRE: 76 mm

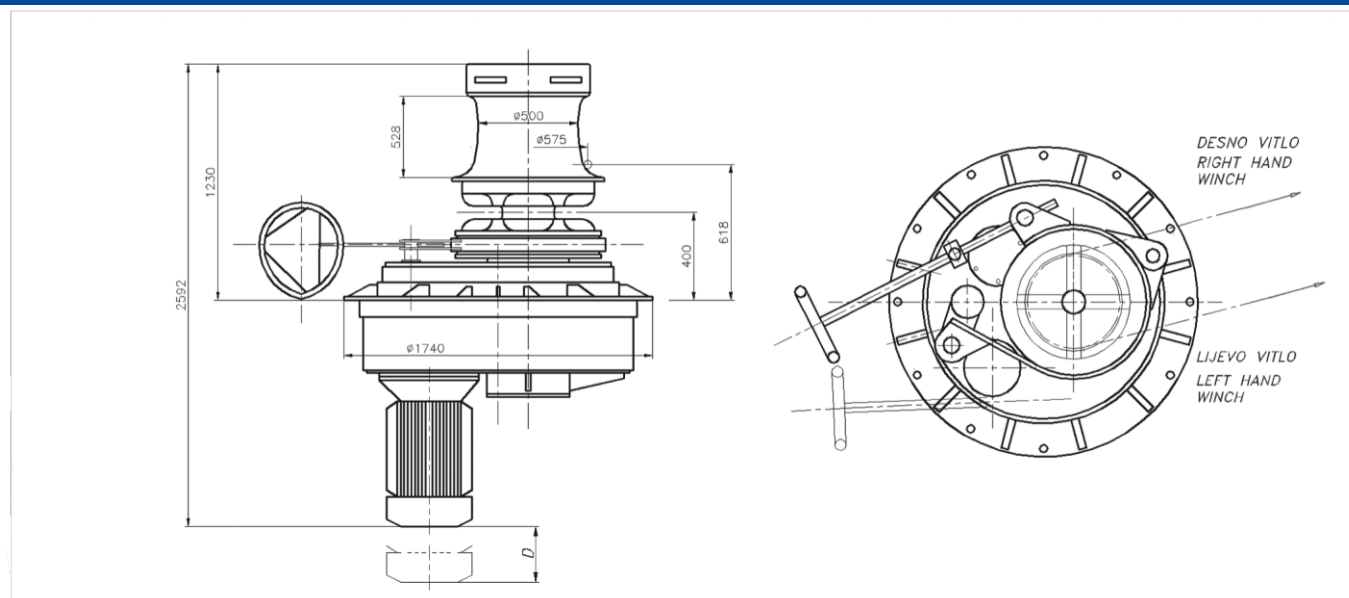
NOMINAL FORCE: 200 t

CONTROL: local



# VERTIKALNA SIDRENO-PRITEZNA VITLA

## VERTICAL WINDLASS MOORING WINCHES



### TEHNIČKE KARAKTERISTIKE

POGON: električni/hidraulički

KALIBAR LANCA: 14 - 68 mm

BRZINA DIZANJA SIDRA: do 12 m/min

PRITEZNA SILA: 2 - 20 t

BRZINA PRITEZANJA: do 20 m/min

KONFIGURACIJA: lančanik i pritezno zvono - vertikalna ugradnja

KOČNICA: ručno upravljana

SPOJKA: ručno upravljana

UPRAVLJANJE: lokalno i/ili daljinsko

### TECHNICAL CHARACTERISTICS

DRIVE: electrical/hydraulic

CHAIN CALIBRE: 14 - 68 mm

ANCHOR LIFTING SPEED: up to 12 m/min

MOORING FORCE: 2 - 20 t

MOORING SPEED: up to 20 m/min

CONFIGURATION: cable lifter and warping end - vertical installation

BRAKE: manually operated

CLUTCH: manually operated

CONTROL: local and/or remote





# OSTALA VITLA OTHER WINCHES

## VITLA ZA JAKOVLIJICE WINCHES FOR PILOT LADDERS

### TEHNIČKE KARAKTERISTIKE

POGON: električni/pneumatski

BRZINA NAMATANJA: do 9 m/min

SILA NAMATANJA: 1000 N

SILA STATIČKA/ DRŽANJA: 3000 N

KAPACITET BUBNJA: (9+5,5) m

### TECHNICAL CHARACTERISTICS

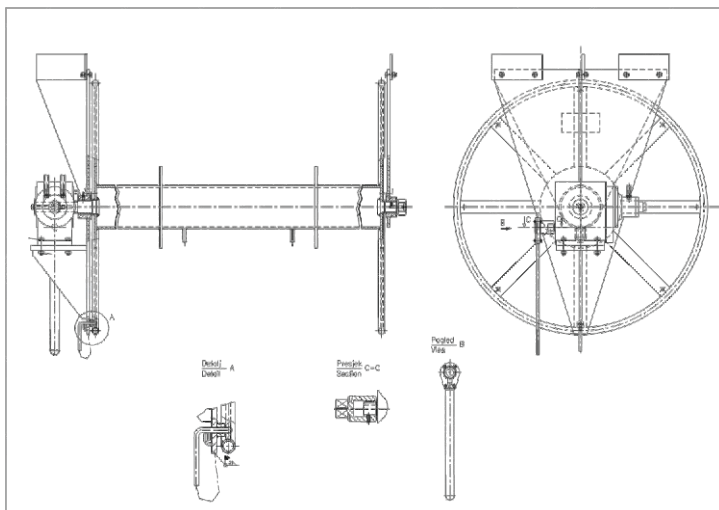
DRIVE: electrical/pneumatic

WINDING SPEED: up to 9 m/min

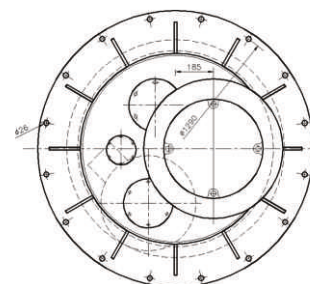
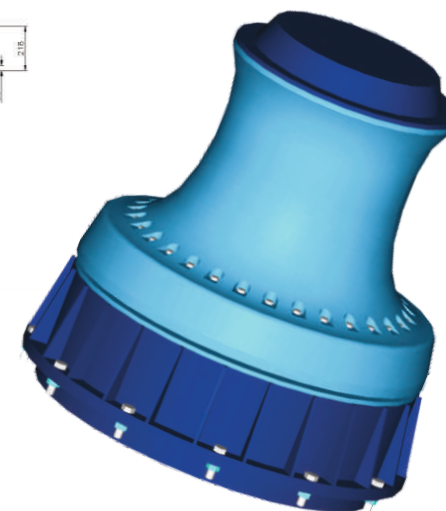
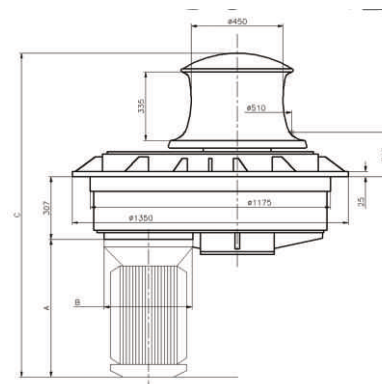
NOMINAL LOAD: 1000 N

STATIC LOAD/ HOLDING LOAD: 3000 N

DRUM CAPACITY: (9+5.5) m



## VERTIKALNA PRITEZNA VITLA - CAPSTANS



### TEHNIČKE KARAKTERISTIKE

POGON: električni/hidraulički

PRITEZNA SILA: 2 - 20 t

BRZINA PRITEZANJA: do 20 m/min

KONFIGURACIJA: pritezno zvono - vertikalna ugradnja

UPRAVLJANJE: lokalno i/ili daljinsko

### TECHNICAL CHARACTERISTICS

DRIVE: electrical/ hydraulic

MOORING FORCE: 2 - 20 t

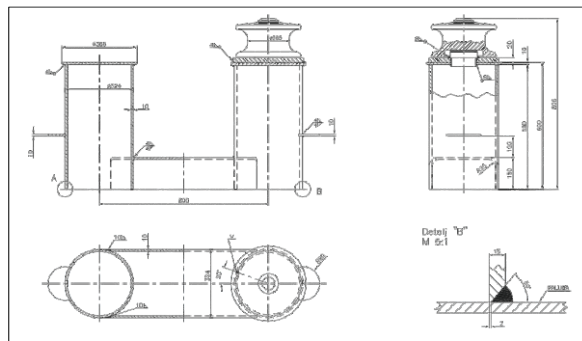
MOORING SPEED: up to 20 m/min

CONFIGURATION: warping end - vertical installation

CONTROL: local and/or remote

# OPREMA ZA PRIVEZ LASHING EQUIPMENT

## BITVE - BOLLARDS



### TEHNIČKE KARAKTERISTIKE

NAZIVNA NOSIVOST: 30 - 1000 kN

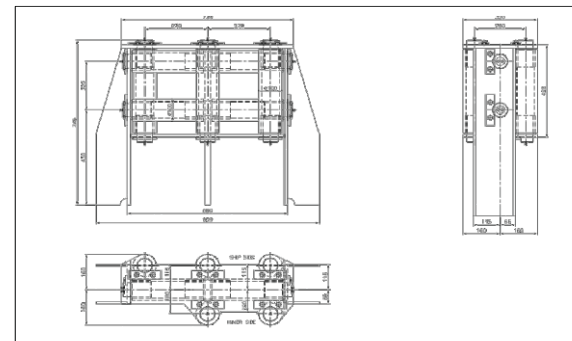
TIPOVI: razni - prema važećim standardima brodogradnje

### TECHNICAL CHARACTERISTICS

NOMINAL LOAD: 30 - 1000 kN

TYPE: various – according to the current shipbuilding standards

## ZJEVAČE - FAIRLEADS



### TEHNIČKE KARAKTERISTIKE

NAZIVNA NOSIVOST: 50 - 270 kN

TIPOVI: razni - prema važećim standardima brodogradnje

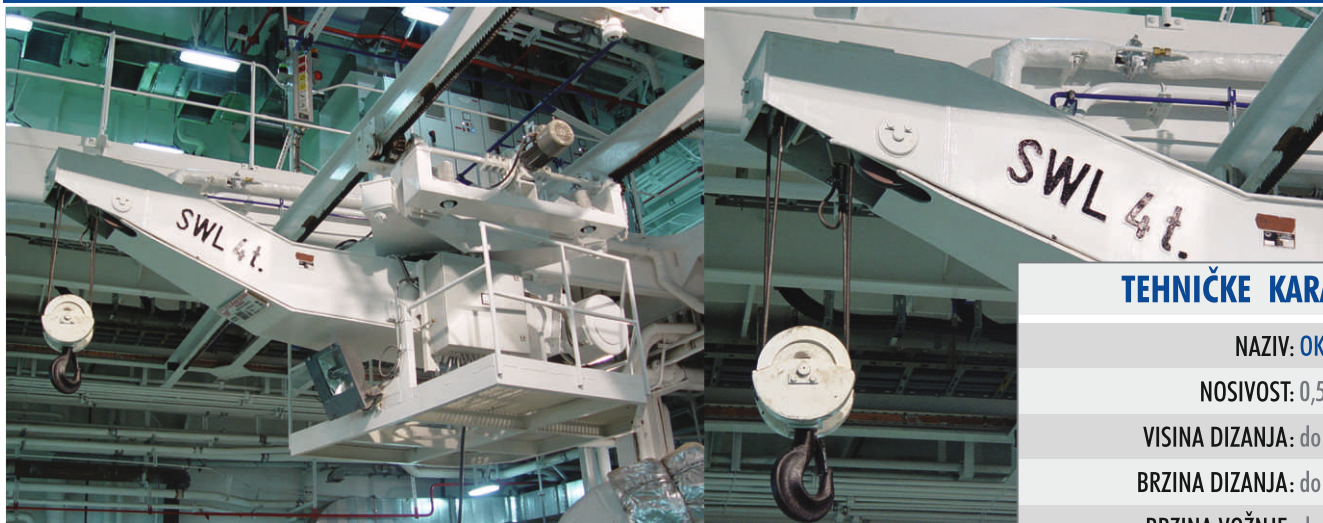
### TECHNICAL CHARACTERISTICS

NOMINAL LOAD: 50 - 270 kN

TYPE: various – according to the current shipbuilding standards



TVORNICA DIZALICA I BRODSKE OPREME  
FACTORY OF CRANES & SHIP EQUIPMENT



## DIZALICE STROJARNICE ENGINE ROOM CRANES

### TEHNIČKE KARAKTERISTIKE

NAZIV: OKRETNA

NOSIVOST: 0,5 - 30 t

VISINA DIZANJA: do 20 m/min

BRZINA DIZANJA: do 7,4 m/min

BRZINA VOŽNJE: do 5 m/min

BRZINA ROTACIJE: do 0,6 okretaja/min

### TECHNICAL CHARACTERISTICS

TITLE: SLEWING

LIFTING CAPACITY: 0.5 - 30 t

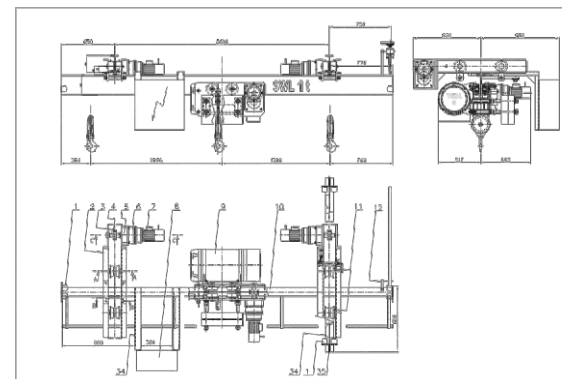
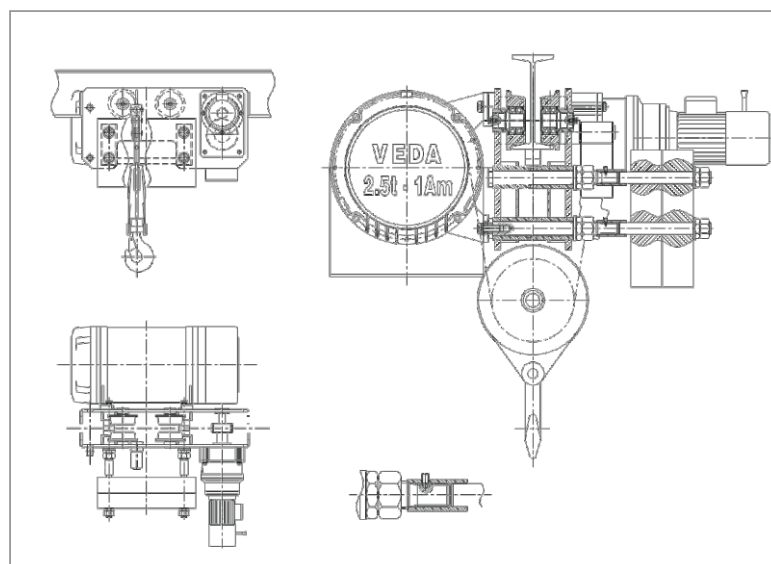
LIFTING HEIGHT: up to 20 m/min

LIFTING SPEED: up to 7.4 m/min

TRAVELLING SPEED: up to 5 m/min

JIB ROTATION SPEED: up to 0.6 rpm

## POMOĆNE DIZALICE STROJARNICE AUXILIARY ENGINE ROOM CRANES



### TEHNIČKE KARAKTERISTIKE

NAZIV: MOSNA

NOSIVOST: 0,5 - 30 t

VISINA DIZANJA: do 20 m/min

BRZINA DIZANJA: do 7,4 m/min

BRZINA VOŽNJE MOSTA: do 5 m/min

BRZINA VOŽNJE VITLA: do 5 m/min

### TECHNICAL CHARACTERISTICS

TITLE: BRIDGE

LIFTING CAPACITY: 0.5 - 30 t

LIFTING HEIGHT: up to 20 m/min

LIFTING SPEED: up to 7.4 m/min

BRIDGE TRAVELLING SPEED: up to 5 m/min

TROLLEY TRAVELLING SPEED: up to 5 m/min



# DIZALICE PROVIJANTA PROVISION CRANES



## TEHNIČKE KARAKTERISTIKE

NOSIVOST: 1 - 10 t

VISINA DIZANJA: do 30 m

BRZINA DIZANJA: do 15 m/min

BRZINA VOŽNJE VITLA: do 17 m/min

BRZINA VOŽNJE KONZOLE: do 10 m/min

DUŽINA KONZOLE: do 30 m

## TECHNICAL CHARACTERISTICS

LIFTING CAPACITY: 1 - 10 t

LIFTING HEIGHT: up to 30 m

LIFTING SPEED: up to 15 m/min

TROLLEY TRAVELLING SPEED: up to 17 m/min

GIRDER TRAVELLING SPEED: up to 10 m/min

GIRDER LENGTH: up to 30 m



# USLUGE IZRADE BRODSKE OPREME SHIP EQUIPMENT MANUFACTURING SERVICES



## NAPRAVA ZA IZVLAČENJE OSOVINE PROPELERA - PROPELLER SHAFT PULLER

Naprava se sastoji od hidrauličkog pogona za vožnju po tračnicama i mehanizma za dizanje koji se može podešavati u vertikalnom i horizontalnom smjeru.

Self propelled rail running trolley with hydraulic drive and lifting mechanism. The trolley is adjustable horizontally and vertically.

### TEHNIČKE KARAKTERISTIKE

#### NAPRAVA ZA IZVLAČENJE OSOVINE PROPELERA

Nosivost: 20 t

Standardna dužina izvlačenja: 20 m

Vertikalni hod mehanizma za dizanje: 1,5 – 4,0 m

Horizontalni hod mehanizma za dizanje:  $\pm 75$  mm

### TECHNICAL CHARACTERISTICS

#### PULLER UNIT

Lifting capacity: 20 t

Driving length, standard: 20 m

Working envelope, vertical: 1.5 – 4.0 m

Working envelope, horizontal:  $\pm 75$  mm

#### OSLONAC

Nosivost: 20 t

Vertikalni hod: 2,0 – 3,5 m

Horizontalni hod:  $\pm 200$  mm

#### SUPPORT UNIT

Load capacity: 20 t

Working envelope, vertical: 2.0 – 3.5 m

Working envelope, horizontal:  $\pm 200$  mm



## MORSKI VEZ PILONA SPUD SUPPORT FOR DREDGERS

### TEHNIČKE KARAKTERISTIKE

POGON: hidraulički

MASA: 12960 kg

ZA PILONE DO :  $\Phi 2000$  mm

### TECHNICAL CHARACTERISTICS

DRIVE: hydraulic

MASS: 12960 kg

FOR SPUDS UP TO:  $\Phi 2000$  mm

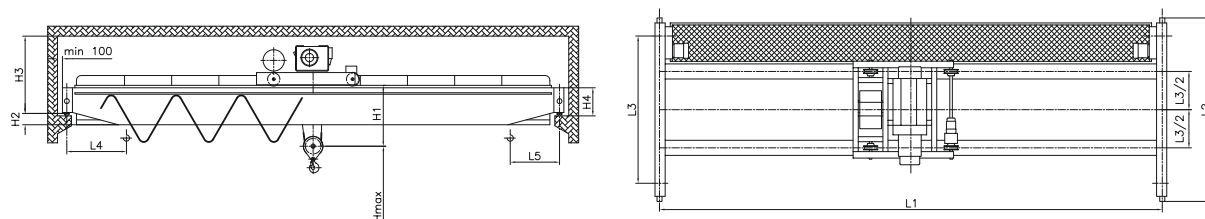
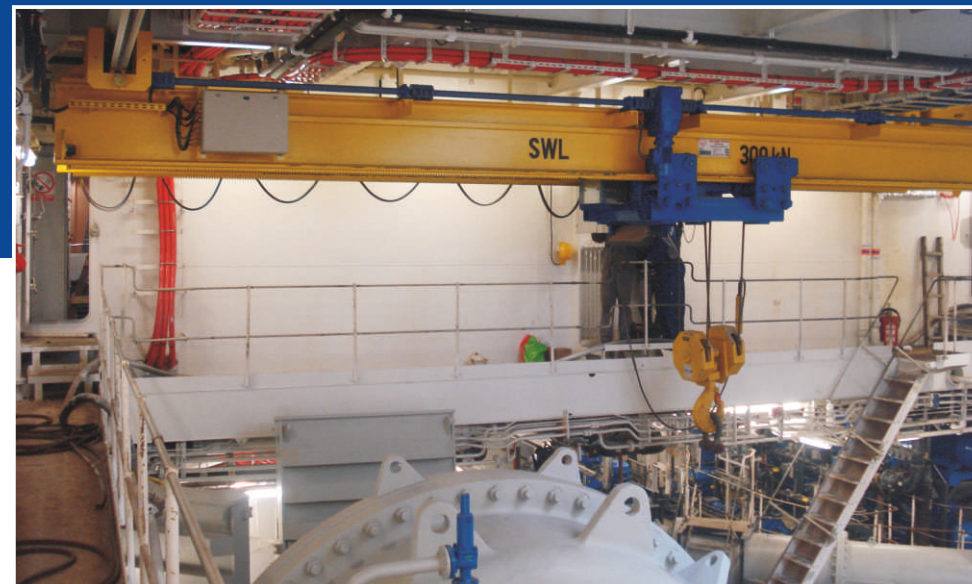
# DIZALIČNI PROGRAM CRANE PROGRAM



TVORNICA DIZALICA I BRODSKE OPREME  
FACTORY OF CRANES & SHIP EQUIPMENT

# DVOTRAČNE ELEKTRIČNE MOSNE DIZALICE - DEMOD

## DOUBLE GIRDER ELECTRIC BRIDGE CRANES - DEMOD



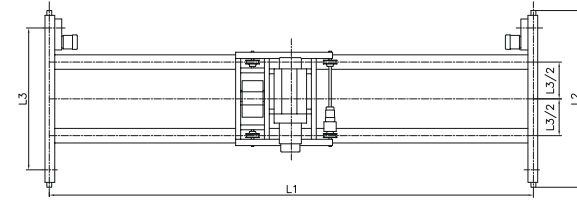
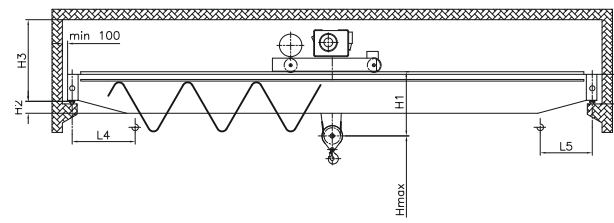
Tip Type	Nosivost [kN] Lifting capacity [kN]	L1 [m] preko do L1 [m] over up to	[mm]										Brzina diz. m/min Lifting speed m/min		Opterećenje kotača [kN] Wheel load [kN]			
			L2	L3	L4	L5	H1	H2	H3	H4	H max	Nor.	Fina Creep	Max	Min			
DEMOM-K-2	20	8	3066	2000	700	280		8	1895	295	10 000 do 26 000	12	1.2	31.5	7.4			
		8 - 12						18						6.3	0.63	37.8	7.9	
		12 - 16						65						4	0.4	42.5	12	
		16 - 20						160								51.5	17.7	
		20 - 25						379								61.5	23.8	
25 - 30	5276	4560	578	2035	435	75.1	28.3											
DEMOM-K-3.2	32	8	3066	2000	700	700	400	70	1895	295	14 000 do 36 000	12	1.2	37.5	8.6			
		8 - 12						100						10	1	42.3	10	
		12 - 16						152								48.7	13.2	
		16 - 20						350								59.2	17.6	
		20 - 25						365								70.9	25.4	
25 - 30	5276	4560	578	2035	435	82.6	26.7											
DEMOM-K-5	50	8	3066	2000	700	700	510	15	1895	295	12 000 do 36 000	12	1.2	45.5	8.8			
		8 - 12						95						6.3	0.63	52.5	11	
		12 - 16						252						4	0.4	60.4	14.5	
		16 - 20						3716						3150			71	20.8
		20 - 25						4716						4000			81	24.7
25 - 30	5276	4560	575	2035	435	85.9	29.5											
DEMOM-K-6.3	63	8	3066	2000	800	800	600	36	1950	350	9000 do 26 000	12	1.2	45.5	14.3			
		8 - 12						145								53.5	16.3	
		12 - 16						255								59.9	19.5	
		16 - 20						3716						3150			68.2	22.5
		20 - 25						4716						4000			81.3	27.8
25 - 30	5380	4560	667	2135	535	100	30.2											

DEMOM-K-8	80	8	3066	2000	850	850	600	62	1950	350	9000 do 20 000	12	1.2	64	14.75		
		8 - 12						156						8	0.8	71	15.7
		12 - 16						340								78	21.2
		16 - 20						369						2035	435	88	24.5
		20 - 25						470						2135	535	100.5	28.3
25 - 30	570			120.1	31												
DEMOM-K-10	100	8	3066	2000	900	900	600	82	1950	350	9000 do 20 000	12	1.2	71	16		
		8 - 12						254						8	0.8	79.5	19.5
		12 - 16						375								91	22.2
		16 - 20						355						2035	435	100.6	24.6
		20 - 25						470						2135	535	112	28.2
25 - 29	620			123	31.2												
DEMOM-K-12.5	125	8	3066	2000	1000	1000	700	150	1950	350	4500 do 13 000	12	1.2	78	19.4		
		8 - 12						265						6	0.6	86.5	23.7
		12 - 16						380								98.2	28.5
		16 - 20						470						2135	535	108.5	31
		20 - 25						560								128.3	34.6
25 - 27	600			137.5	36.2												
DEMOM-K-16	160	8	3066	2000	1100	1100	700	165	2035	435	4500 do 10 000	6	0.6	88.5	22.8		
		8 - 12						260								106.5	25.75
		12 - 16						385								118.5	29.25
		16 - 20						485						2135	535	131.5	32.75
		20 - 22						580								137.5	35.75
DEMOM-K-20	200	8	3066	2000	1100	1100	800	160	2135	535	4500 do 10 000	6	0.6	116.2	25.5		
		8 - 12						360								126	28.5
		12 - 16						480								136.5	33.5
		16 - 17						570								142.8	34.8



# DVOTRAČNE ELEKTRIČNE MOSNE DIZALICE - DEMOD

## DOUBLE GIRDER ELECTRIC BRIDGE CRANES - DEMOD



Tip Type	Nosivost [kN] Lifting capacity [kN]	L1 [m] preko do L1 [m] over up to	[mm]										Brzina diz. m/min Lifting speed m/min		Opterećenje kotača [kN] Wheel load [kN]																
			L2	L3	L4	L5	H1	H2	H3	H4	H max	Nor.	Fina Creep	Max	Min																
DEMOD-2	20	8	2566	2000	700	700	280	10	845	295	10 000 do 26 000	12	1.2	15.5	7.5	850	850	600	117	895	295	9000 do 20 000 9000 up to 20 000	12	1.2	45.7	14.5					
		8 - 12						18						15.9	8.5										156	950	350	8	0.8	50.7	15.8
		12 - 16						120						20	12										340	1035	435	6	0.6	55.6	20.8
		16 - 20						3716						3150	26.5										17.5	454				62.5	24
		20 - 25						4566						4000	33.25										24.2	570				70	27.7
25 - 30	5276	4560	42	28	670				88.5	30																					
DEMOD-3.2	32	8	2566	2000	700	700	400	70	905	295	14 000 do 36 000 14 000 up to 36 000	12	1.2	21.5	9	900	900	600	117	895	295	9000 do 20 000 9000 up to 20 000	12	1.2	55.5	16					
		8 - 12						100						23	10										254	1070	350	8	0.8	62	19
		12 - 16						3066						2500	27.7										13.5	460				69	21.6
		16 - 20						3866						3150	34.5										18	455	1150	435		76.2	23
		20 - 25						4716						4000	41.5										25	570				83	27.7
25 - 30	5276	4560	49	26	720				94	31																					
DEMOD-5	50	8	2566	2000	700	700	510	15	905	295	12 000 do 36 000 12 000 up to 36 000	12	1.2	29.75	8.5	1100	1100	700	150	850	350	4500 do 13 000 4500 up to 13 000	12	1.2	65.5	16.5					
		8 - 12						150						10.6	350															72.2	22.7
		12 - 16						307						14.1	480										935	435				81	28.5
		16 - 20						3716						3150	46.6										20.5	570	1035	535		88.5	31
		20 - 25						4716						4000	52.5										24.7	570				106.5	35
25 - 30	5276	4560	64.8	29	570				112.5	35.9																					
DEMOD-6.3	63	8	2566	2000	800	800	600	19	795	295	9000 do 26 000 9000 up to 26 000	12	1.2	30.5	15	1100	1100	700	165	1035	435	4500 do 10 000 4500 up to 10 000	6	0.6	84.7	22.7					
		8 - 12						200						16	260															92.25	25.7
		12 - 16						3066						2500	38.5										19.5	385	1135	535		99	29
		16 - 20						3716						3150	43.5										22	485				112.7	33.5
		20 - 25						4716						4000	51.5										26.8	580				118.5	33
25 - 30	5276	4560	69	29.5	580				104.7	25.7																					
DEMOD-20	200	8	2820	2000	1100	1100	800	160	850	350	4500 do 10 000 4500 up to 10 000	12	1.2	32.5	16	1100	1100	800	160	1255	535	4500 do 10 000 4500 up to 10 000	6	0.6	104.7	25.7					
		8 - 12						200						19.5	360															110.7	28
		12 - 16						3320						2500	43.5										22	480				119.5	33.5
		20 - 25						4716						4000	51.5										26.8	570				125.9	34.9
25 - 30	5276	4560	69	29.5	570																										

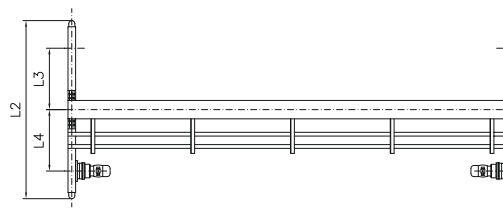
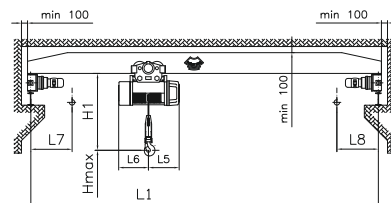
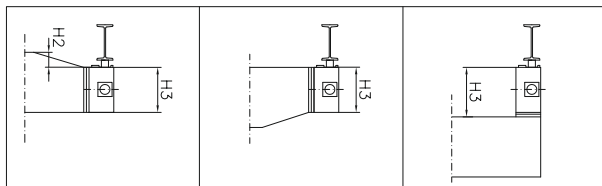
DEMOD-8	80	8	2566	2000	850	850	600	117	895	295	9000 do 20 000 9000 up to 20 000	12	1.2	45.7	14.5						
		8 - 12						156						950	350	8	0.8	50.7	15.8		
		12 - 16						3216						3150	20	12	62.5	24			
		16 - 20						3866						4000	26.5	17.5	70	27.7			
		20 - 25						4316						4560	33.25	24.2	88.5	30			
25 - 30	5276	4560	42	28																	
DEMOD-10	100	8	2566	2000	900	900	600	82	1070	350	9000 do 20 000 9000 up to 20 000	12	1.2	55.5	16						
		8 - 12						254						1070	350	8	0.8	62	19		
		12 - 16						3216						3150	27.7	13.5	69	21.6			
		16 - 20						3866						4000	34.5	18	76.2	23			
		20 - 25						4716						4000	41.5	25	83	27.7			
25 - 30	5276	4560	49	26	94	31															
DEMOD-12.5	125	8	2566	2000	1000	1000	700	150	850	350	4500 do 13 000 4500 up to 13 000	12	1.2	65.5	16.5						
		8 - 12						350								8	0.8	72.2	22.7		
		12 - 16						3216						3150	46.6	20.5	81	28.5			
		16 - 20						3866						4000	52.5	24.7	88.5	31			
		20 - 25						4820						4560	64.8	29	106.5	35			
25 - 26	5380	4560	64.8	29	112.5	35.9															
DEMOD-16	160	8	2716	2000	1100	1100	700	165	1035	435	4500 do 10 000 4500 up to 10 000	6	0.6	84.7	22.7						
		8 - 12						2820						2000	260					92.25	25.7
		12 - 16						3320						2500	385	1135	535			99	29
		16 - 20						3970						3150	485					112.7	33.5
20 - 22	4820	4000	580					118.5	33												
DEMOD-20	200	8	2820	2000	1100	1100	800	160	1255	535	4500 do 10 000 4500 up to 10 000	6	0.6	104.7	25.7						
		8 - 12						3320						2500	360					110.7	28
		12 - 16						3320						2500	480					119.5	33.5
		16 - 17						3970						3150	570					125.9	34.9





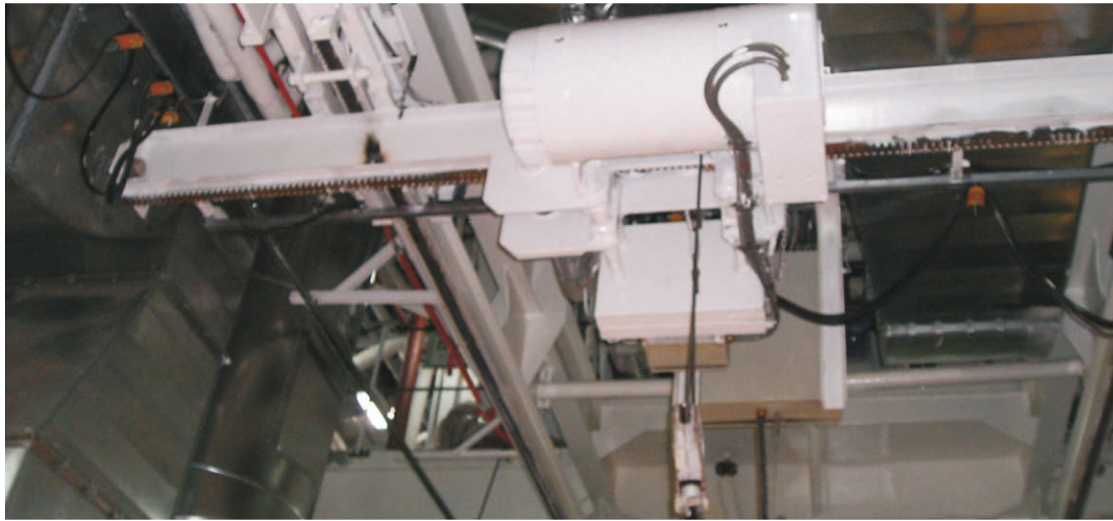
# JEDNOTRAČNE ELEKTRIČNE MOSNE DIZALICE - JEMOD

## SINGLE GIRDER ELECTRIC BRIDGE CRANES - JEMOD



Tip Type	Nosivost [kN] Lifting capacity [kN]	L1 [m] preko do L1 [m] over up to	[mm]										Brzina diz. m/min Lifting speed m/min		Opterećenje kotoča [kN] Wheel load [kN]						
			L2	L3	L4	L5	H1	H2	H3	H4	H max	Nor.	Final Creep	Max	Min						
JEMOD-1	10	6	2136	1600/2	365	435	685	615	968	70	230	10 000	12.5	0.12	6.9	4.55					
		6-8								110					7.9	5.1					
		8-12								92					8.9	5.9					
		12-16								3066					2500/2	75	350	6.3	0.63	11.5	8.5
		16-20								3716					3150/2	195	435	8	0.8	15	9.8
		20-24								4716					4000/2	289	435	6.3	0.63	19.7	14.8
		24-28								5276					4560/2	393	435	8	0.8	21.2	19.2
JEMOD-2	20	6	2136	1600/2	384	461	711	634	1108	156	230	10 000 do 26 000	12.5	1.2	11	4.5					
		6-8								86					12.5	5.5					
		8-12								294					4	0.4	15.9	6.9			
		12-16								3066					2500/2	191	350	3.2	0.32	18.5	10
		16-20								3716					3150/2	382	435	3.2	0.32	21	12.7
		20-24								4716					4000/2	399	435	3.2	0.32	25.3	16.6
		24-28								5276					4560/2	410	435	3.2	0.32	28.5	21
JEMOD-3.2	32	6	2136	1600/2	524	576	826	774	1275	91	230	14 000 do 36 000 14 000 up to 36 000	12	1.2	19	5.9					
		6-8								191					10	1	18.5	6.5			
		8-12								300					6.3	0.63	21.6	7.4			
		12-16								3066					2500/2	316	350	5	0.5	24.5	9.6
		16-20								3716					3150/2	380	435	5	0.5	32	11
		20-24								4716					4000/2	319	435	5	0.5	33	13.9
		24-28								5276					4560/2	605	435	5	0.5	34.5	21
28-30	5716	5000/2	695	435	5	0.5	39.60	26.8													

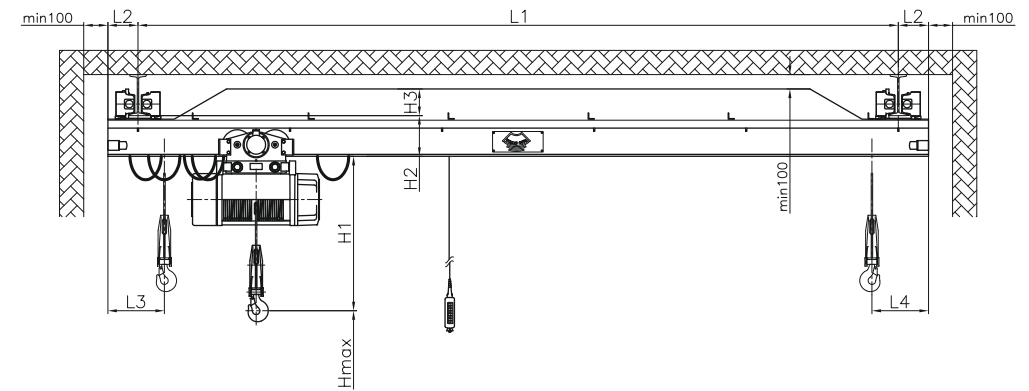
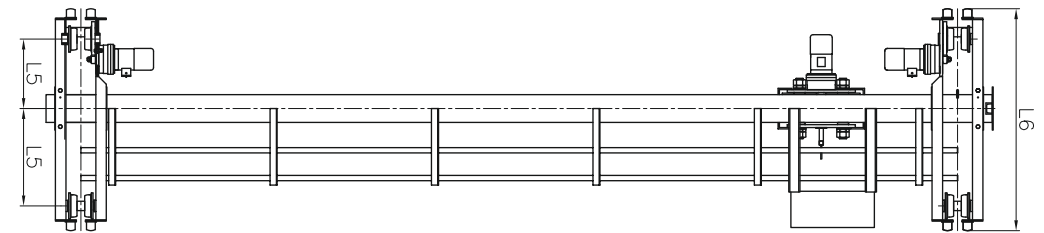
JEMOD-5	50	6	2266	1800/2	562	587	837	776	1390	81	350	14 000 do 36 000 14 000 up to 36 000	12	1.2	26.7	6.7					
		6-8								176					26.9	7.4					
		8-12								380					32.4	9.6					
		12-16								3066					2000/2	396	4	0.4	32.4	9.6	
		16-20								3716					3150/2	490	3.2	0.32	41	16.2	
		20-24								4716					4000/2	690	435	45.1	19.6		
		24-28								5276					4560/2	700	435	52	25		
28-30	5716	5000/2	700	435	54.2	26.5															
JEMOD-6.3	63	6	2266	1800/2	1000	650	1140	1140	1140	176	350	9000 do 26 000 9000 up to 26 000	12	1.2	30	9.8					
		6-8								266					35	10					
		8-12								386					40.2	13.8					
		12-16								3066					2500/2	492	6	0.6	47	17.5	
		16-20								3866					3150/2	695	435	52.2	21		
		20-24								4716					4000/2	715	435	56.2	23		
		24-28								5276					4560/2	715	435	56.2	23		
28-30	5716	5000/2	715	435	56.2	23															
JEMOD-8	80	6	2266	1800/2	1000	700	1520	1520	1520	286	350	9000 do 20 000 9000 up to 20 000	12	1.2	44.55	11.4					
		6-8								386					8	0.8	50.8	13.1			
		8-12								3066					2000/2	686	8	0.8	50.8	13.1	
		12-16								3216					2500/2	607	435	6	0.6	56.2	19.2
		16-20								6500					3150/2	701	435	62	20.3		
JEMOD-10	100	6	2266	1800/2	1000	800	1520	1520	1520	372	350	9000 do 20 000 9000 up to 20 000	12	1.2	48	13.5					
		6-8								347					8	0.8	54	14.8			
		8-12								3216					2000/2	701	435	6	0.6	62.6	17.8
		12-16								3216					2500/2	715	435	66.5	21		



# VIŠEĆE ELEKTRIČNE MOSNE DIZALICE - VIMOD

## OVERHEAD ELECTRIC BRIDGE CRANES - VIMOD

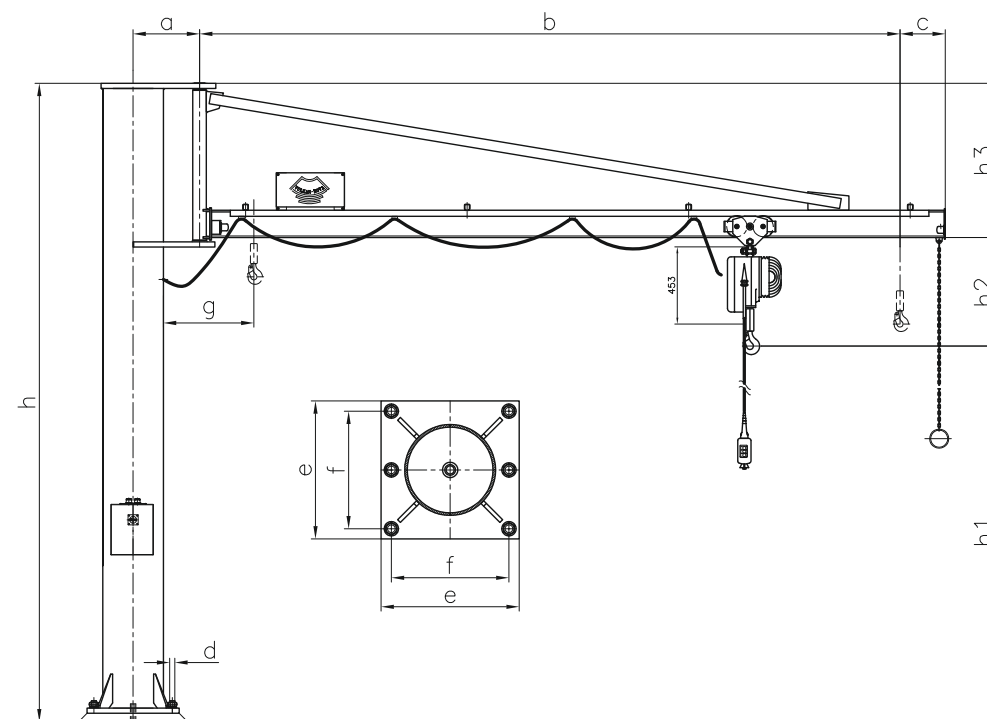
Tip Type	Nosivost [kN] Lifting capacity [kN]	L1 [m] preko do L1 [m] over up to	[mm]										Brzina diz. m/min Lifting speed m/min		Opterećenje kotača [kN] Wheel load [kN]	
			L2	L3	L4	L5	H1	H2	H3	H4	H max	Nor.	Fina Creep	Max	Min	
VIMOD-0.5	5	4	250 do 600	541	541	800	2050	832	240	0	10 000	1.6	1.6	3.9	0.5	
		4 - 8				300	5		1.25							
		8 - 12				400	6.25		2.25							
		12 - 15				367	7.9		3.45							
		15 - 18	367	9.8	4.5											
VIMOD-1	10	4	250 do 600	610	610	800	2050	968	280	0	10 000	12.5	1.25	9	0.9	
		4 - 8				340	11.5		1.4							
		8 - 12				400	15.9		5							
		12 - 15				367	18.3		7.2							
		15 - 18	367	20.9	10											
VIMOD-2	20	4	270 do 650	621	621	800	2050	1108	340	0	10 000 do 26 000 10 000 up to 26 000	12	1.2	13.5	1.8	
		4 - 8				400	16.2		2.5							
		8 - 12				475	18.5		5.9							
		12 - 15				575	19.6		7.5							
		15 - 18	575	110	17	2.7										
VIMOD-3.2	32	4	270 do 650	801	801	800	2050	1275	400	0	14 000 do 36 000 14 000 up to 36 000	12	1.2	19.5	3.3	
		4 - 8				367	19.5		3.3							
		8 - 12				469	22		4.5							
		12 - 15				475	23.8		7.6							
		15 - 18	575	110	24.6	7.9										
VIMOD-5	50	4	350 do 900	801	801	800	2050	1390	400	0	12 000 do 36 000 12 000 up to 36 000	12	1.2	24.5	3	
		4 - 8				469	26.8		3.9							
		8 - 12				580	32.4		7.9							
		12 - 15				586	35		9.8							
		15 - 18	586	150	38.9	12.1										



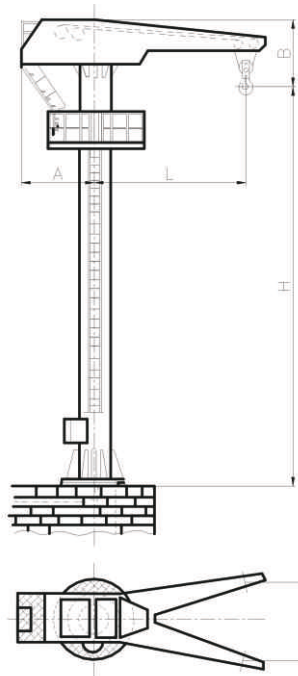
# STUPNE KONZOLNE DIZALICE PILLAR-MOUNTED JIB CRANES



OZNAKA DESIGNATION	NAZIVNI DOHVAT m (l) NOMINAL REACH m (l)	NOSIVOST kg LIFTING CAPACITY kg	VISINA STUPA mm (h) PILLAR HEIGHT mm (h)	HOD DIZ. mm CRANE MOTION mm	HOD KUKE mm (h1) HOOK MOTION mm (h1)	UGRADBENE MJERE (u mm) INSTALLATION DIMENSIONS (mm)								
						a	b	c	d	e	f	g	h2	h3
SKDL-2/ 125 SKDL-2/ 250 SKDL-2/ 500 SKDL-2/ 1000	2	125 250 500 1000	3015	1275	1725 1725 1725 1655	280	1720	180	M 20	400	340	445	550	740
SKDL-3/ 125 SKDL-3/ 250 SKDL-3/ 500 SKDL-3/ 1000	3	125 250 500 1000	3015	2275	1725 1725 2460 2330	280	2720	180	M 20	400	340	445	550	740
			4050	1977	2460 2330	390	2610		M 30	540	460	633	640	1040 1080
SKDL-4/ 125 SKDL-4/ 250 SKDL-4/ 500 SKDL-4/ 1000	4	125 250 500 1000	3015	3165	1725 2460 2460 2330	280	3720	180	M 20	400	340	555	550	740
			4050	2867	2460 2330	390	3610		M 30	540	460	743	640	1040 1080
SKDL-5/ 125 SKDL-5/ 250 SKDL-5/ 500 SKDL-5/ 1000	5	125 250 500 1000	3015	4165	1725 2460 2460 2330	280	4720	180	M 20	400	340	555	550	740
			4050	3867	2460 2330	390	4610		M 30	540	460	743	640	1040 1080
SKDL-6/ 125 SKDL-6/ 250 SKDL-6/ 500 SKDL-6/ 1000	6	125 250 500 1000	3015	5055	1725 2460 2460 2330	280	5720	180	M 20	400	340	655	550	740
			4050	4757	2460 2330	390	5610		M 30	540	460	853	640	1040 1080
SKDL-7/ 125 SKDL-7/ 250 SKDL-7/ 500 SKDL-7/ 1000	7	125 250 500 1000	4050	5965	1725	280	6720	180	M 20	400	340	755	550	1040
				5647	2460 2330	390	6610		M 30	540	460	963	640	1040 1080



# DIZALICE ZA MARINE CRANES FOR MARINAS

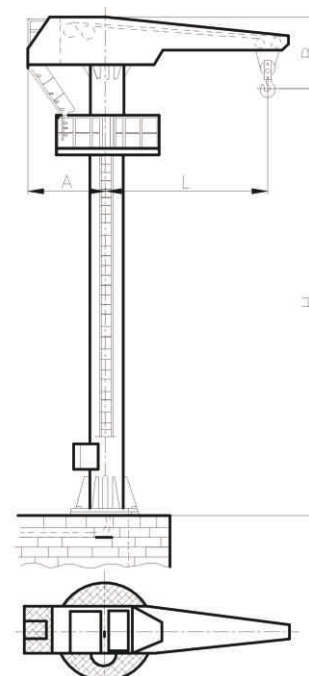


## Dvokraka

Nosivost [t]	Brzina dizanja [m/min]	A	B	C	L	H
2 x 5	6.3 / 0.65	2000	2000	2250	4500	6000
2 x 6.3	5 / 0.5	2000	2000	2250	5000	7500
2 x 7.5	4.2 / 0.42	2000	2000	2250	5000	10000

## Double jib

Lifting capacity [t]	Lifting speed [m/min]	A	B	C	L	H
2 x 5	6.3 / 0.65	2000	2000	2250	4500	6000
2 x 6.3	5 / 0.5	2000	2000	2250	5000	7500
2 x 7.5	4.2 / 0.42	2000	2000	2250	5000	10000



## Jednokraka

Nosivost [t]	Brzina dizanja [m/min]	A	B	L	H
2	6.3 / 1	1750	1500	4000	5000
3.2	10 / 1	1750	1500	4000	5000
5	6 / 6.3	1750	1500	4500	6000
10	3.2 / 0.32	2000	2000	5000	7500
15	4.2 / 0.42	2500	2250	5000	10000

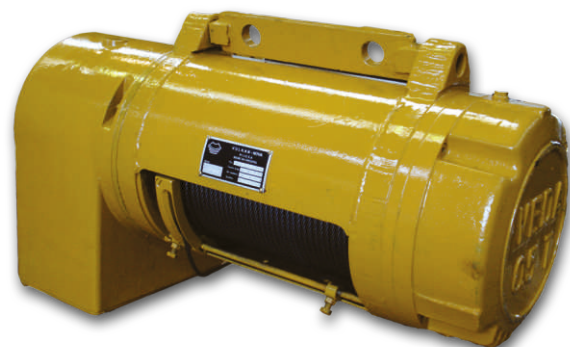
## Single jib

Lifting capacity [t]	Lifting speed [m/min]	A	B	L	H
2	6.3 / 1	1750	1500	4000	5000
3.2	10 / 1	1750	1500	4000	5000
5	6 / 6.3	1750	1500	4500	6000
10	3.2 / 0.32	2000	2000	5000	7500
15	4.2 / 0.42	2500	2250	5000	10000



# UREĐAJI ZA DIZANJE I OPREMA ZA DIZALICE

## HOISTING DEVICES AND CRANE EQUIPMENT



### DIZALICA NA UŽE - TIP "VEDA"

U sklopu mosnih, portalnih i konzolnih dizalica, te monorail staza, primjenjuju se za prijenos malih i srednjih tereta u radionicama, montažnim halama, ljevaonicama i skladištima.

Nepomično postavljene koriste se kao potezna vitla.

- Nosivost 0.5 do 10 t
- Visina dizanja do 70 m
- Trofazni kočioni el. motor s koničnim rotorom
- Posebne izvedbe prema zahtjevu korisnika

### ROPE HOIST - TYPE "VEDA"

In combination with bridge, portal and cantilever cranes as well as monorail runways are used for hoisting small and medium weights in warehouses, mounting shops, foundries and warehouses.

When fixed on a support it can be used as a mooring winch.

- Capacity 0.5 to 10 t
- Hoisting height up to 70 m
- Three-phase el. motor with a cone rotor
- According to customer's request a special design is available

### REDUKTORI

Primjenjuju se kao pogonski element na voznim vitlima, mosnim dizalicama, kolicima za vožnju te za ostale namjene u strojogradnji.

### REDUCTION GEARS

Are applied as driving units on the travelling winches, bridge cranes, trolleys and other uses in the engineering industry.



### KOTAČI ZA DIZALICE

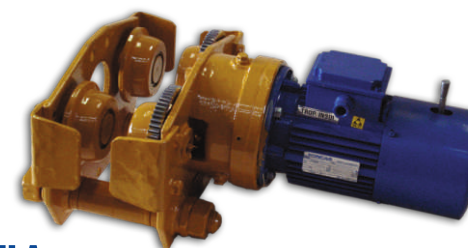
Izrađeni su od ljevanog čelika u lakoj i teškoj izvedbi sa kliznim i kotrljajućim ležajevima, promjera od 160 do 800 mm.

### CRANE WHEELS

Are made of cast steel in a light and heavy workmanship with sliding and roller bearings, diameter from 160 to 800 mm



**KUKE NOSIVOST 0.125 - 20 t**  
**HOOKS OF A CAPACITY 0.125 - 20 t**



### VOZNA VITLA

Primjenjuju se za ugradnju na mosne jednogredne i dvogredne dizalice, portalne te monorail staze. Proizvedene su u standardnoj, ljevaoničkoj i izvedbi prema zahtjevu korisnika.

- Jednotračna vitla - nosivost 0.5 do 10 t
- Dvotračna vitla - nosivost 0.5 do 20 t
- Kolica za vožnju - nosivost 0.5 do 10 t
- Vitla po posebnom zahtjevu

### TRAVELLING WINCHES

Can be fitted on to monorail and two rail bridge cranes, portal and monorail runways. They are manufactured in a standard, casting workmanship or by a customer's request.

- Monorail winches - capacity 0.5 to 10 t
- Two-rail winches - capacity 0.5 to 20 t
- Trolleys - capacity 0.5 to 10 t
- Winches made on special requests



DNV

# DET NORSKE VERITAS QUALITY MANAGEMENT SYSTEM CERTIFICATE

Certifikat br. / Certificate No. **93181-2011-AQ-HRV-ACCREDIA**

Ovaj certifikat potvrđuje da je / This certifies that

**SUSTAV UPRAVLJANJA KVALITETOM ORGANIZACIJE / THE QUALITY MANAGEMENT SYSTEM OF**

**VULKAN - NOVA d.o.o.**

**Radnička bb - 51 000 Rijeka - Croatia**

**SUKLADAN UVJETIMA STANDARDA ZA SUSTAV UPRAVLJANJA KVALITETOM  
CONFORMS TO THE QUALITY MANAGEMENT SYSTEMS STANDARD**

**ISO 9001:2008**

Ovaj certifikat vrijedi za sljedeće područje primjene:

This certificate is valid for the following scope:

*(Dodatna pojašnjenja povodom namjene i primjene uvjeta standarda mogu se dobiti izravno od certificirane organizacije)*

*(Further clarifications regarding the scope and the applicability of the requirements of the standard(s) may be obtained by consulting the certified organisation)*

**Razvoj i proizvodnja dizalica (industrijske dizalice i postrojenja za unutrašnji transport) i brodske opreme (palubna oprema i brodske dizalice)**

**Design and manufacture of cranes (industrial cranes and machinery for internal transport) and ship's equipment (deck machinery and ship's cranes)**

Datum isteka

Expiry Date

**2014-02-16**

Za Certifikacijsku kuću

for the Accredited Unit

**DET NORSKE VERITAS ITALIA S.R.L.**

Mjesto i datum

Place and date

**Agrate Brianza, (MB) 2011-02-16**

**Settore EA : 17 - 18**

**Franjo Potak**

Lead Auditor



SGQ N°003 A  
SGA N°003 D  
SCR N°004 F

PRG N°003 B  
SSI N°002 C  
FSH N°001 I

Membro di MSA EA per gli schemi di accreditamento SGQ,  
SGA, PRG, PMS, ISF e LAB di MSA IAF per gli schemi di  
accreditamento SGA, SGI, SSI, FSH e PRG  
e di MSA ILAC per gli schemi di accreditamento LAB

**Vittore Marangon**

Management Representative

Radi održavanja važenja predmetnog certifikata potrebni su periodični audit (svakih 6, 9 ili 12 mjeseci), te cjelokupna provjera sustava svake tri godine

The validity of this certificate is subject to periodical audits (every 6, 9 or 12 months) and the complete re-assessment of the system every three years

Sua poduzeća s važećim certifikatom, objavljeni su u bazi podataka na internet adresama [www.dnv.it](http://www.dnv.it) / [www.accredia.it](http://www.accredia.it) - All the companies with a valid certificate are online at the following addresses: [www.dnv.it](http://www.dnv.it) and [www.accredia.it](http://www.accredia.it)



**REFERENTNA LISTA - REFERENCE LIST**



*Tradicije i kvalitete naših proizvoda*

*Tradition and quality of our products*



**VULKAN-NOVA d.o.o. Radnička bb, 51000 Rijeka - CROATIA**  
Tel.: +385 / 51 436 080, Fax: +385 / 51 436 074, e-mail: [info@vulkan-nova.hr](mailto:info@vulkan-nova.hr)

[www.vulkan-nova.hr](http://www.vulkan-nova.hr)

